

# Pope's Pleasure Farm

Pope's farm was in the middle of the Upper Village approx. where Frowyke Crescent is today.

During early part of the 20<sup>th</sup> century people from North London were looking to spend their day of rest in the country away from the smoke and smog of the city, cycling clubs, bands of hope, temperance groups all joined in for a day out.

South Mimms was the first stop out of Barnet using the St. Albans Road they would have come on their bicycles and by Charabanc, (a French word for a vehicle with multiple seats) making a reasonable easy day trip and for the time on very reasonable roads.

Having got to the country what could they do, visit the Public House, not a good idea for an Edwardian family with children from a temperance movement, how about a purpose-built facility, with large buildings for inclement weather, woods, pond, for the children, a top and sweet shop, fields with donkeys in a relative safe environment, and a tea garden with white tablecloths for the adults, with a room for the ladies.

Clearly the enterprising Farmer who ran Popes thought so, calling it Popes Pleasure Farm, he had a set of postcards published that visitors could buy and send to their loved ones at home, a clever idea, advertising, visitors actually paid for, no doubt at the time the postcards posted from the box outside the Post office next door would have arrived before the visitors returned home.

If we look at the census returns for 1911 instead of Pope's we find Pelham's pleasure Farm listed, perhaps a change of owners?

The occupiers are Mr George Branch 61, farm bailiff living with his daughter Evangeline age 31, next door we have Louis Abbott age 32 a cowman and wife Edith age 27, son Thomas 8 mns. and sister (in law) Rose Webb 14, in another cottage we find William Camfield age 71 labourer and wife Ann age 53, another building is shown as an engine house.

It is imagined that local women, girls and men would be drafted in to help with the day trippers in the busy season especially when a cycling club arrived or a charabanc full of eager visitors.

**TARIFF.** **Popes' Pleasure Farm.**

Sunday Schools, Bible Classes, Mothers' Meetings, Bands of Hope, Cyclists and others

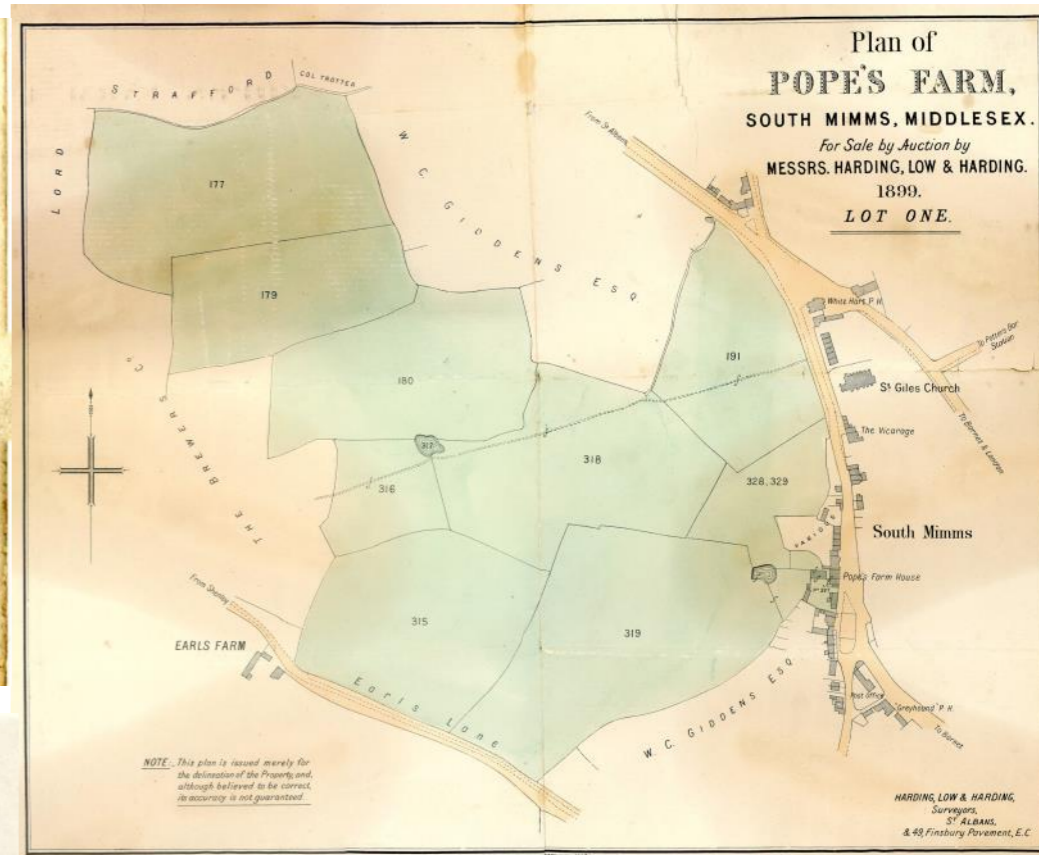
catered for at following prices:—

**Teas for Adults.**—Bread and Butter (*ad lib.*); Water Cress or Lettuce; Two kinds of Cake; Home-made Scone and Butter; Preserves.—**9d.** each.

**Children's Teas.**—Bread and Butter; Two kinds of Cake; Preserves. **6d.** each.

**Cold Luncheons.**—Ham and Beef or Meats to order; Salad; Stewed Fruit; Custard or Milk Puddings to order; Cheese.—**1/3** each.

During the day Cups of Tea, 1d.; all kinds of Mineral Waters, Milk, &c., from 1d. Drinking Water direct from Main.



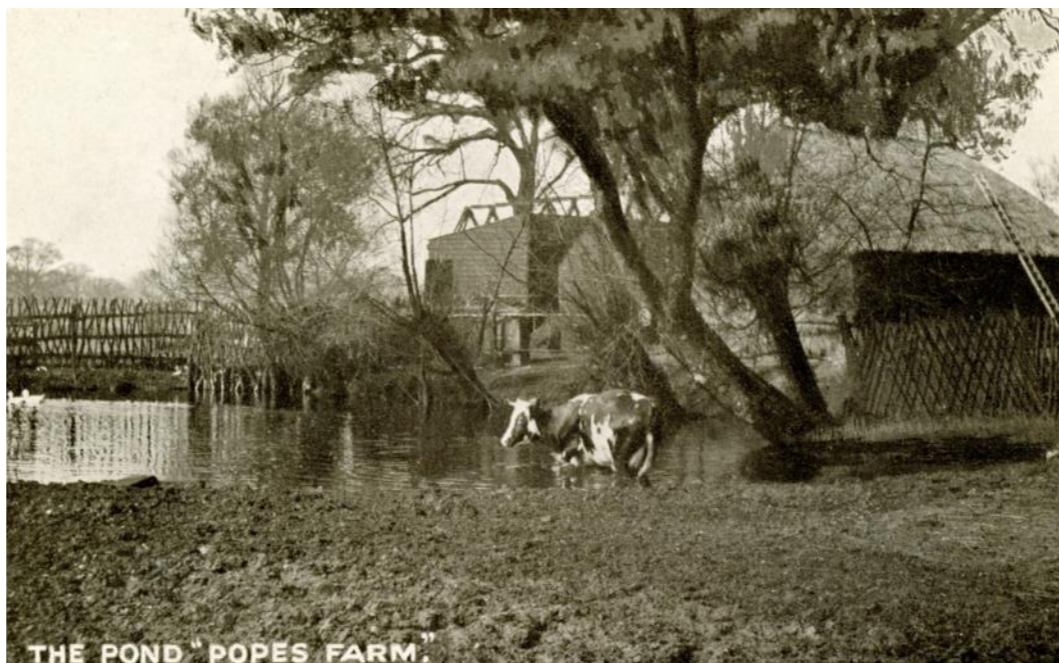
**Pope's Pleasure Farm,**   
**SOUTH MIMMS, near Barnet.**  
 On main road from High Barnet to St. Albans.

BEAUTIFUL COUNTRY, NEAR WOODS. Admirably suited for Outings of Sunday Schools, Bands of Hope and Pleasure Parties. **CYCLISTS' REST.**

Cold Luncheons & Teas at moderate prices. All kinds of Mineral Waters, &c.  
**CYCLING CLUBS SPECIALLY CATERED FOR.**

Extensive Meadow for Sports. Donkeys. Cocoa Nuts. Swings. Toy & Sweet Shop.  
 Large Buildings. Special Rooms for Ladies.

Terms on application to the Proprietors, **PULHAM & SONS.**



With thanks to Judy Marshall of Ridge for the loan of the postcards and Judy White of Warrengate Farm for the map.